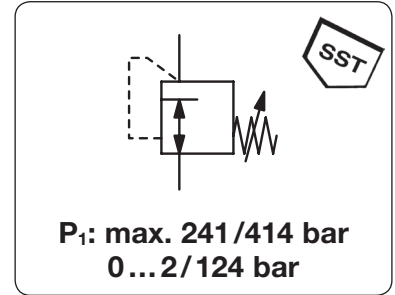


Description	Diaphragm-operated high pressure regulator of small and light design.	
Adjustment	by black plastic knob	
Relieving function	non-relieving	Weight aluminium 200 g, brass 430 g
Gauge port	1/4" NPT for inlet and outlet pressure	Mounting position any
Media	RH0 corrosive or non-corrosive gases up to purity 5.0 max. 241 bar	RH1 compressed air, non-corrosive gases or liquids max. 414 bar
Supply pressure	< 1 x 10 ⁻⁶ mbar l/s He	< 1 x 10 ⁻⁴ mbar l/s He
Leakage rate	-40 °C to 60 °C / -40 °F to 140 °F	-25 °C to 75 °C / -13 °F to 167 °F
Temperature range	brass, optionally stainless steel or aluminium	nickel-plated aluminium
Body	diaphragm made of stainless steel	piston with EPDM o-ring, as option NBR or FKM
Regulating system	PFA or CTFE as option	CTFE or Vespel as option
Valve seat	brass, optionally stainless steel	stainless steel and aluminium
Inner valve		



Dimensions			K _v value (m³/h)	Flow rate		Connection thread NPT	Pressure range bar	Order number
A	B	C		m³/h	l/min			

High pressure regulator 241 bar						for gases, non-relieving, brass, stainless steel diaphragm	RH0
41	82	14	0.05	9*1	150*1	1/4" NPT	RH0-02A RH0-02B RH0-02C

High pressure regulator 414 bar						for gases and liquids, non-relieving, aluminium, piston with EPDM	RH1
41	76	13	0.05	84*2	1400*2	1/4" NPT	RH1-02A RH1-02B RH1-02C
41	76	13	0.05	192*3	3200*3	1/4" NPT	RH1-02D RH1-02E RH1-02F



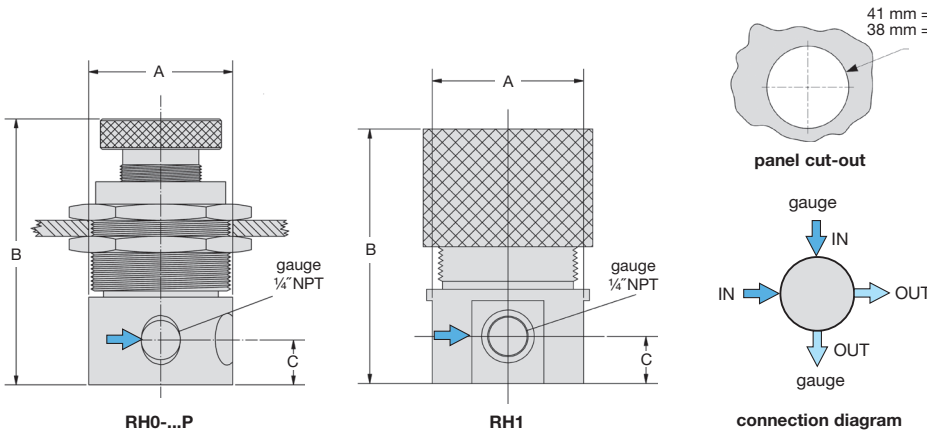
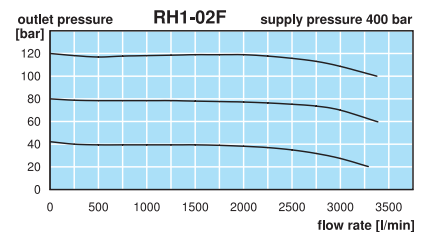
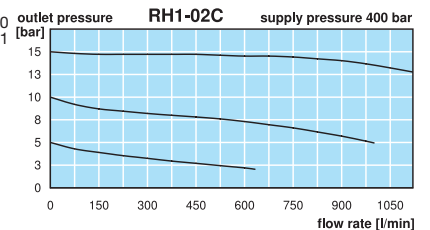
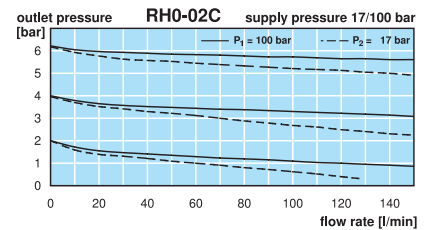
RH0



RH1

Special options, add the appropriate letter

- 1/8" NPT connection thread for RH0 RH0-01 .
- aluminium body for RH0 RH0-02 . A
- stainless steel body for RH0 RH0-02 . S
- CTFE seat for RH0 RH0-02 . X52
- Vespel seat for RH1 RH0-02 . X45
- NBR/Buna-N o-ring for RH1 RH1-02 . N
- FKM o-ring for RH1 RH1-02 . V
- free of grease and oil suitable for oxygen, specially cleaned, P1 < 200 bar for RH0 RH0-02 . L
- for oxygen inlet side HM P1 < 200 bar for RH1 RH1-02 . 15
- brass pressure gauge inlet side H outlet side RH . -02 . GM
- SST pressure gauge inlet side H outlet side RH . -02 . G
- for panel mounting for RH0 RH0-02 . P



*1 at 100 bar supply pressure and 6 bar outlet pressure
*2 at 400 bar supply pressure and 15 bar outlet pressure
*3 at 400 bar supply pressure and 120 bar outlet pressure